

MARKET ACTION REPORT

April 2012

City: Norwalk



TNT Partners

Wendy Tremaglio 203-858-2850
 Steven Thomson 203-247-6765
 TNT@TNTPartners.net
 www.TNTPartners.net



Price Range: All | Properties: Single Family

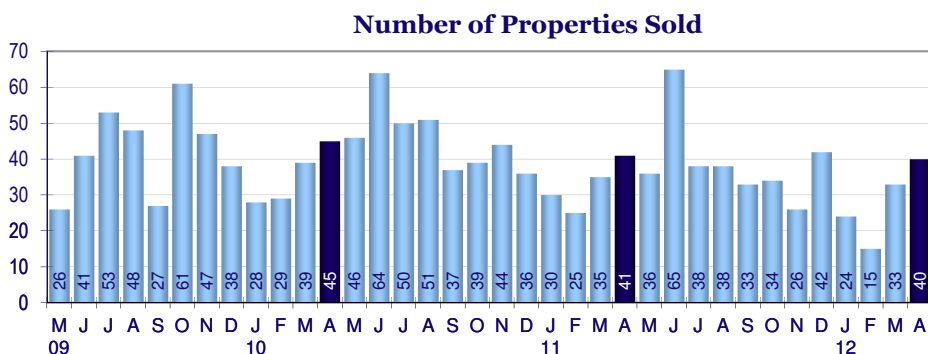
Market Profile & Trends Overview

	Month	Trending versus*:				YTD	Trending versus*:	
		LM	L3M	PYM	LY		Prior YTD	Prior Year
Median List Price of all Current Listings	\$485,000	2%		-3%				
Average List Price of all Current Listings	\$682,528	0%		-10%				
April Median Sales Price	\$411,500	7%	4%	-2%	-2%	\$396,575	-3%	-5%
April Average Sales Price	\$490,359	-11%	-12%	-16%	-15%	\$557,096	-11%	-3%
Total Properties Currently for Sale (Inventory)	481	5%		-1%				
April Number of Properties Sold	40	21%		-2%		112	-15%	
April Average Days on Market (Solds)	135	-22%	-10%	27%	13%	150	27%	26%
Asking Price per Square Foot (based on New Listings)	\$294	-6%	4%	-1%	4%	\$284	-8%	0%
April Sold Price per Square Foot	\$222	-19%	-12%	-11%	-17%	\$252	-9%	-6%
April Month's Supply of Inventory	12.0	-13%	-33%	1%	-8%	17.5	32%	34%
April Sale Price vs List Price Ratio	94.7%	2.7%	2.8%	-1%	.7%	92.1%	-1.8%	-2.0%

* LM=Last Month / L3M=Last 3 Months / PYM=Same Month Prior Year / LY=Last Year (2011) / YTD = Year-to-date | Arrows indicate if Month / YTD values are higher (up), lower (down) or unchanged (flat)

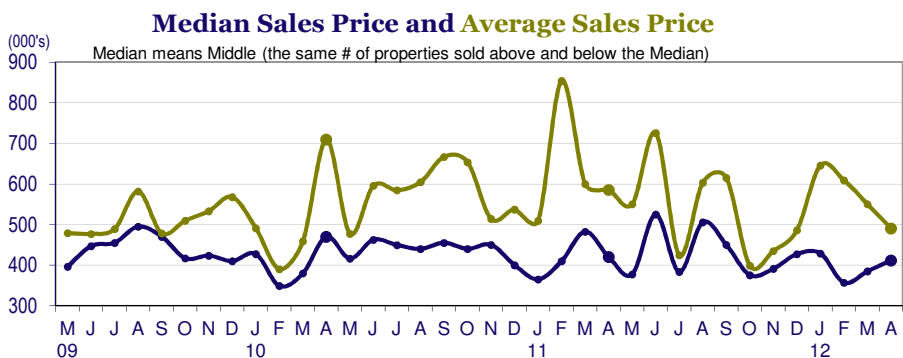
Property Sales

April Property sales were 40, down 2.4% from 41 in April of 2011 and 21.2% higher than the 33 sales last month. April 2012 sales were at their lowest level compared to April of 2011 and 2010. April YTD sales of 112 are running 14.5% behind last year's year-to-date sales of 131.



Prices

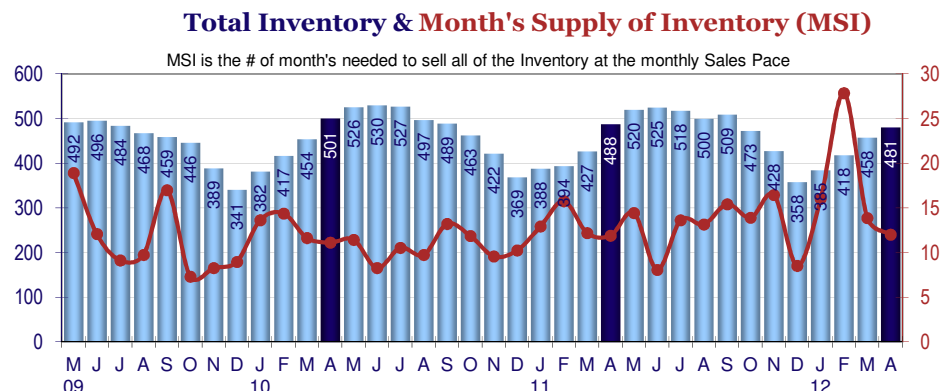
The Median Sales Price in April was \$411,500, down 2.0% from \$420,000 in April of 2011 and up 6.9% from \$385,000 last month. The Average Sales Price in April was \$490,359, down 16.2% from \$585,032 in April of 2011 and down 10.9% from \$550,186 last month. April 2012 ASP was at the lowest level compared to April of 2011 and 2010.



Inventory & MSI

The Total Inventory of Properties available for sale as of April was 481, up 5.0% from 458 last month and down 1.4% from 488 in April of last year. April 2012 Inventory was at its lowest level compared with April of 2011 and 2010.

A comparatively lower MSI is more beneficial for sellers while a higher MSI is better for buyers. The April 2012 MSI of 12.0 months was at its highest level compared with April of 2011 and 2010.



City: *Norwalk*



TNT Partners

Wendy Tremaglio 203-858-2850

Steven Thomson 203-247-6765

TNT@TNTPartners.net

www.TNTPartners.net



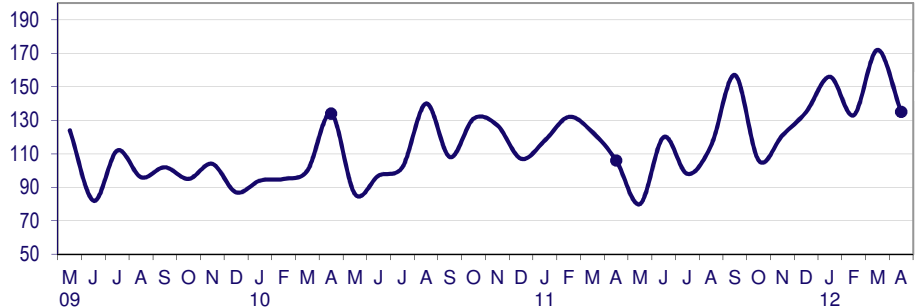
Price Range: All | Properties: Single Family

Market Time

The average Days On Market (DOM) shows how many days the average Property is on the market before it sells. An upward trend in DOM tends to indicate a move towards more of a Buyer's market, a downward trend a move towards more of a Seller's market. The DOM for April was 135, down 21.5% from 172 days last month and up 27.4% from 106 days in April of last year. The April 2012 DOM was at a mid level compared with April of 2011 and 2010.

Days On Market for Sold Properties

Average Days on Market (Listing to Contract) for properties sold during the month

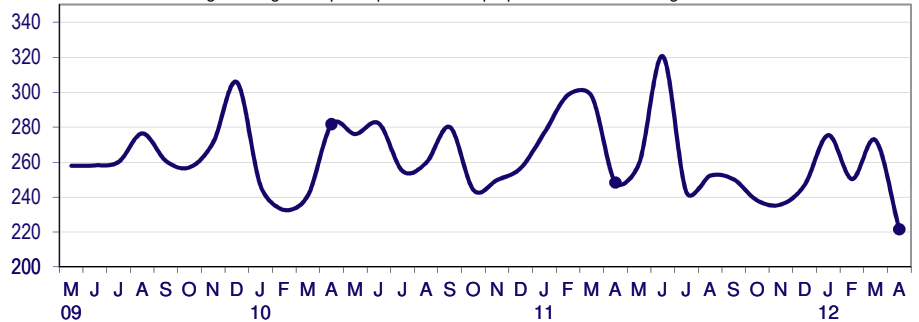


Selling Price per Square Foot

The Selling Price per Square Foot is a great indicator for the direction of Property values. Since Median Sales Price and Average Sales price can be impacted by the 'mix' of high or low end Properties in the market, the selling price per square foot is a more normalized indicator on the direction of Property values. The April 2012 Selling Price per Square Foot of \$222 was down 18.7% from \$273 last month and down 10.8% from 248 in April of last year.

Selling Price per Square Foot

Average Selling Price per Square Foot for properties that sold during the month

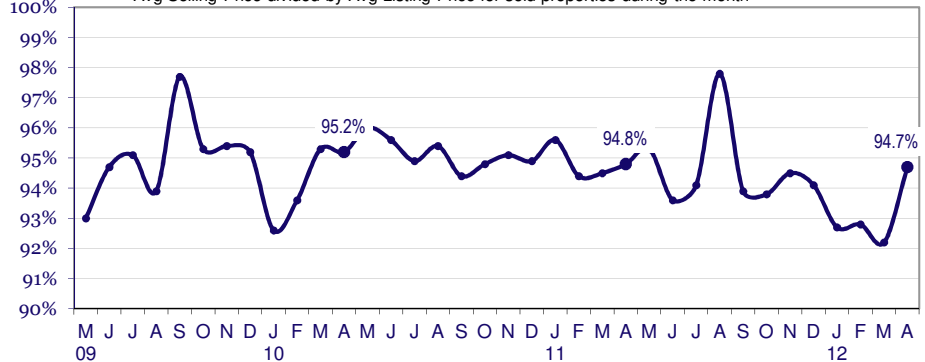


Selling Price vs Original Listing Price

The Selling Price vs Original Listing Price reveals the average amount that Sellers are agreeing to come down from their original list price. The lower the ratio is below 100% the more of a Buyer's market exists, a ratio at or above 100% indicates more of a Seller's market. The April 2012 Selling Price vs Original List Price of 94.7% was up from 92.2% last month and down from 94.8% in April of last year.

Selling Price versus Listing Price Ratio

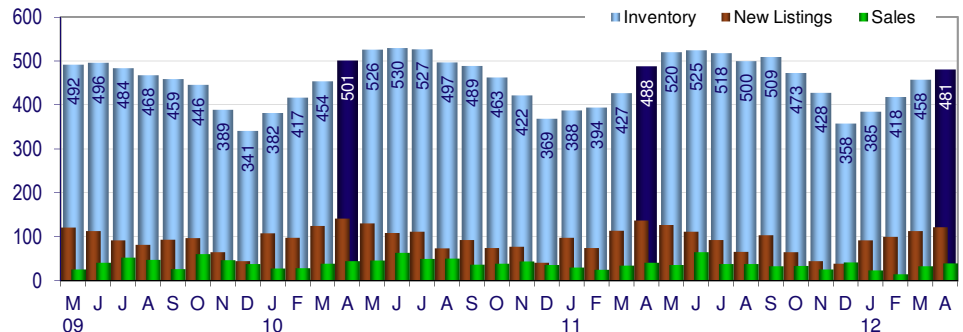
Avg Selling Price divided by Avg Listing Price for sold properties during the month



Inventory / New Listings / Sales

This last view of the market combines monthly inventory of Properties for sale along with New Listings and Sales. The graph shows the basic annual seasonality of the market as well as the relationship between these items. The number of New Listings in April 2012 was 122, up 8.0% from 113 last month and down 10.9% from 137 in April of last year.

Inventory / New Listings / Sales



Inventory / Listings / Sales

City: *Norwalk*

Price Range: All | Properties: Single Family



TNT Partners

Wendy Tremaglio 203-858-2850

Steven Thomson 203-247-6765

TNT@TNTPartners.net

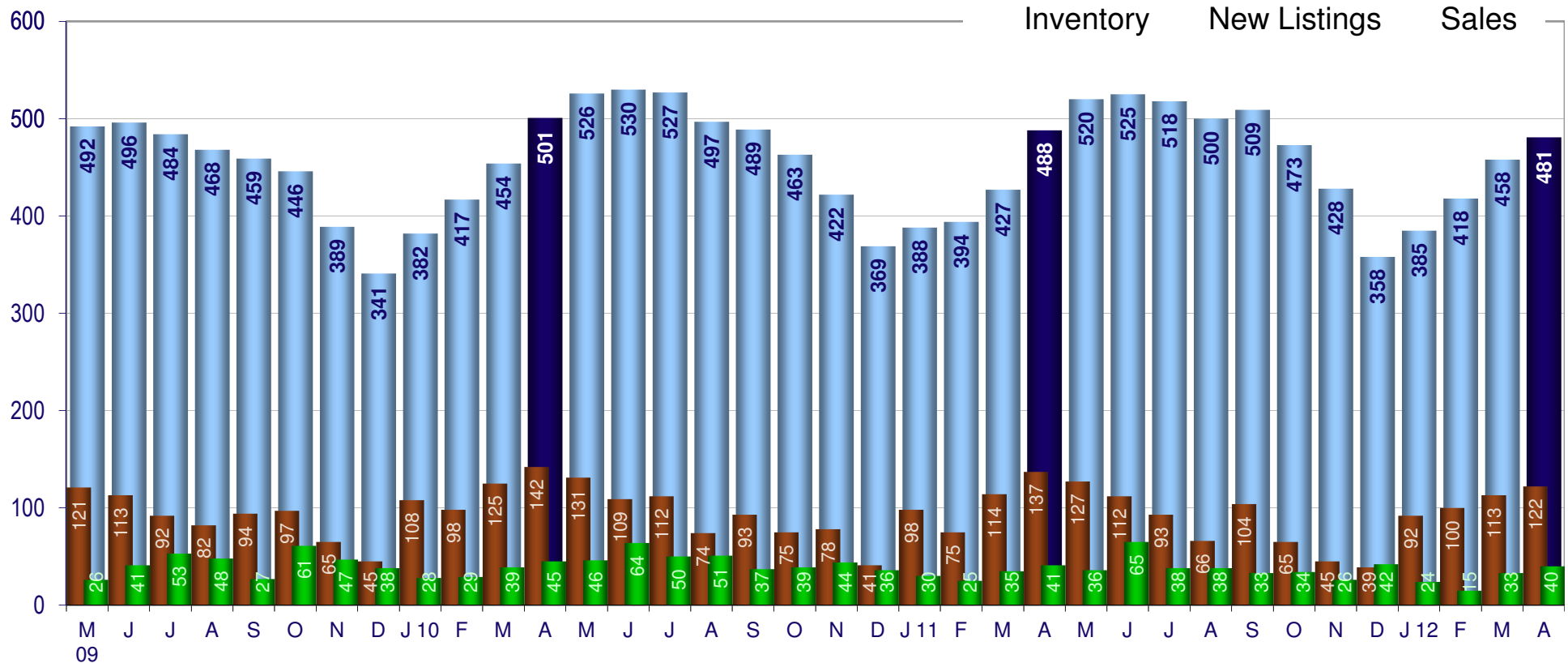
www.TNTPartners.net



April 2012

Inventory / New Listings / Sales

This last view of the market combines monthly inventory of Properties for sale along with New Listings and Sales. The graph shows the basic annual seasonality of the market as well as the relationship between these items. The number of New Listings in April 2012 was 122, up 8.0% from 113 last month and down 10.9% from 137 in April of last year.



Copyright © | Price Range: All | Property Types: Single Family

Data is provided courtesy of Greater Fairfield County CMLS, Inc. and may not reflect all relevant real estate activity. does not warrant or guarantee

does not warrant or guarantee the accuracy of this information. It is the responsibility of any buyer or seller to verify any and all information relevant to such consumer's real estate transaction.